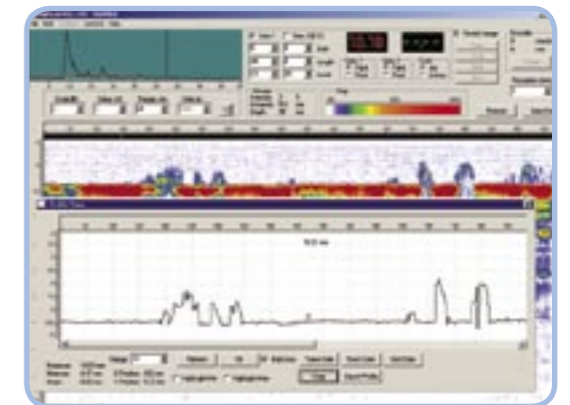


R-Scan is a manual B-scan system for plate and pipe developed by Silverwing (UK) Ltd.



R-scan is a portable, battery operated PC based digital ultrasonic B-scan imaging system. The manual, single axis encoded, scanner utilises a 5 MHz dual dry coupled wheel probe allowing B-scan ultrasonic imaging to be carried out without the need for traditional ultrasonic couplant. The lightweight battery operated system comes as a complete package including a scanner suitable for both plate and pipe from 45mm diameter to flat.

The digital ultrasonic transmitter / receiver processes the UT signals from the dry coupled TWP25 dual element wheel probe and combines the images with detailed positional information from the single axis encoder. The R-Scan is connected to the notebook computer (supplied) via the USB 2.0 port which can handle scanning speeds of up to 200mm/sec. The software has standard flaw detector controls for the A-scan set-up, simplifying training and operation requirements. All controls such as gain, time base range, filtering and gate adjustments are on the same screen as the active A-scan display and the B-scan image.



The easy to use defect sizing tools combined with cut and paste functions allow the export of defect images directly into other Windows software packages such as Word or Excel. These features turn the R-Scan from a simple corrosion detection device into one of the most cost effective, comprehensive Ultrasonic B-scan Imaging Systems on the market today.



Technical Specification

System Case	Batteries, charger and digital computer interface fixed into case. Storage area for scanning unit.
System Dimensions	410 x 340 x 180 mm
System Weight Complete	8.5 Kg
Scanner Dimensions	Length 207 mm x Width 76 mm x Height 125 mm
Scanner Weight	650 gram
Umbilical Cable	Length 5 metre
Transducer	TWP25 5MHz Dry Coupled wheel probe
Power Supply	DC - 14.4v 8 Ah NiMh battery pack

- **Battery operated**
- **Lightweight and portable**
- **Standard flaw detector controls**
- **Dry coupled ultrasonic wheel probe**



Notebook System Supplied

- Windows XP
- PC PIII 2GHz processor or better
- 256MB RAM or better
- 40GB Hard drive
- CD Rom
- SVGA 800 x 600 minimum resolution display